

Schedule Information

NON-PROFIT ORG.
U.S. POSTAGE
PAID
PITTSBURGH, PA
PERMIT NO. 3316

How to schedule a program:

1. Choose your program. Please allow ample time to schedule your program, as all programs must be reserved at least three weeks prior to the program date.
2. Select several dates and times in case the date that you prefer is unavailable. Classes are unavailable from 12 pm – 1 pm due to staff scheduling.
3. Contact the Education Program Scheduler at 412-258-9439 or education.programs@aviary.org to make your reservation.
4. Please have a credit card available to hold your reservation. The credit card will only be charged upon completion of a program or in the event of a cancellation. If you wish to pay by check or cash, you may do so at any time prior to your program. If you wish to pay by credit card, the card given at the time of the reservation will be charged on the date of the program.
5. Upon receipt of the confirmation letter, please sign both copies and return a signed copy to the National Aviary.

Group Minimums:

- All programs have a minimum of 10 paid students.
All groups must have at least 1 chaperone for every 10 students.

For a listing of the National Aviary's daily **events and activities**, please check our website at www.aviary.org.

The National Aviary is supported in part by the Allegheny Regional Asset District, the PA Department of Community and Economic Development, and the PA Historical and Museum Commission.



NATIONAL AVIARY
Allegheny Commons West
Pittsburgh, PA 15212

NATIONAL AVIARY



CLASSES PRESCHOOL & KINDERGARTEN 2010-2011



NATIONAL AVIARY

412-323-7235 / www.aviary.org

Classes Grades Pre-K

All classes are 30 minutes • \$8.00 per student

Feathered Friends

From peacocks to parrots to penguins, all birds have ... feathers! Through interactive storytelling, lots of touchable feathers, and a visit from some of the National Aviary's "feathered friends", children will learn what makes feathers so special.

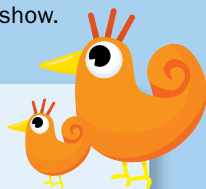
Penguins, Penguins, Everywhere!

Do you like to swim? Would you like to wear a feathered coat? How about eating fish for breakfast? Preschoolers will learn what it takes to swim, waddle, slide and even eat like a penguin through interactive storytelling and a special visit from one of the National Aviary's African Penguins!

Mother Nature's Diner

Ever wonder what birds eat in the wild? Do they eat worms, seeds, or fruit? Maybe even a mouse? Meet "Mother Nature" as she shares with the children what birds eat through an interactive puppet show.

NEW! For Groups



The National Aviary is excited to offer the opportunity for groups to enjoy our new **Helen M. Schmidt FliteZone™ Theater** and the rooftop **Sky Deck**. In the Helen M. Schmidt FliteZone™ Theater, guests will witness the flights of macaws, vultures, eagles, parrots and multiple other species in a setting enhanced by lighting, video and sound. Located on the roof of the Helen M. Schmidt Theater, the Sky Deck will allow visitors a breathtaking, up-close entrée into the world of raptors. These venues have limited seating and therefore advance registration for groups is required. Please contact the Education Program Reservationist at 412-258-9439 or education.programs@aviary.org for details of show times, pricing, and availability.



Outreach Programs

All of the classes listed above are available to come to your school through an outreach program! Locations must be within 30 driving miles of the National Aviary and the cost of the 30 minute program is \$250. A discount of \$175 for the second program is available for back-to-back presentations of the same program. The recommended audience size for outreach programs is less than 40 students.

Self-guided Tours

Cost is \$8.00 per student

Experience all that the National Aviary has to offer at a special group rate! Self-guided tours provide your "flock" with the chance to explore the nation's premier bird park at their own pace, while enjoying feedings, bird shows, and more! More information, including a list of daily events, is available on our website or by calling 412-258-9439.



Cancellation and Rescheduling Policy:

- If you must cancel your visit, please contact us at least 48 hours in advance to reschedule or cancel for no fee. A \$50.00 cancellation fee will be charged to your holding credit card for failure to provide at least 48 hours notice. In the case of inclement weather the cancellation fee is waived.
- If you must reschedule your program, please contact us as early as possible and at least 48 hours in advance of your originally scheduled time. There is no fee for the first rescheduling of a program if you provide at least 48 hours notice. If you do not provide 48 hours notice or for subsequent rescheduling there is a \$50.00 fee. Please have multiple alternate dates for your program available at the time you call to reschedule.
- Failure to cancel or reschedule a program prior to the class, resulting in a "no call, no show" will be charged the full amount for the program.

Late Arrivals:

All groups are encouraged to arrive at least 30 minutes prior to the scheduled program. This will give your group enough time to check in and organize prior to the start of the program. Due to the number of classes scheduled each day, late arrivals will have time deducted from their program. If a group arrives more than half way into their scheduled class time, the class will be cancelled and the group given the opportunity to enjoy a self-guided tour.